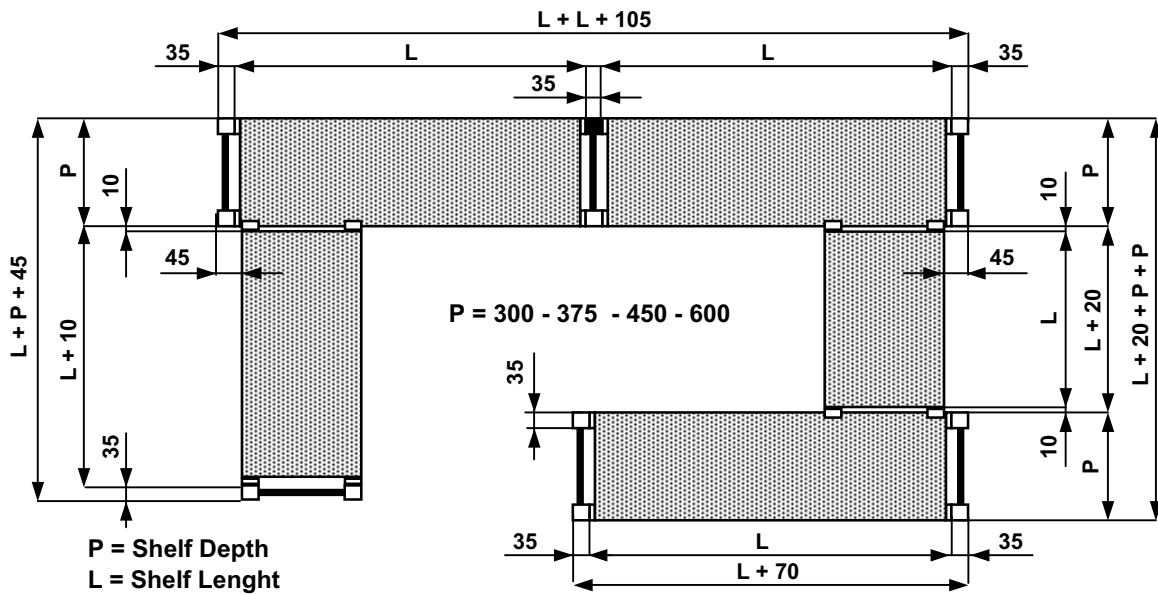
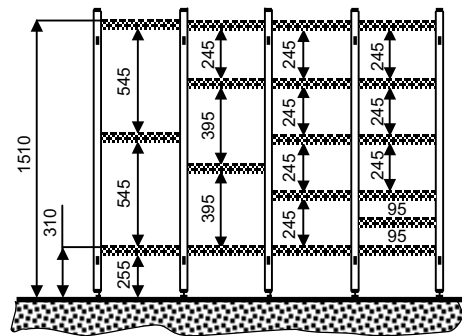


DIMENSIONS



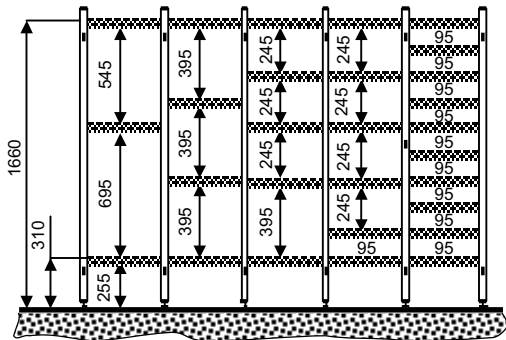
GAP BETWEEN SHELVES WITH SHOULDERS HIGH H = 1550

N° of shelves → 3 4 5 6



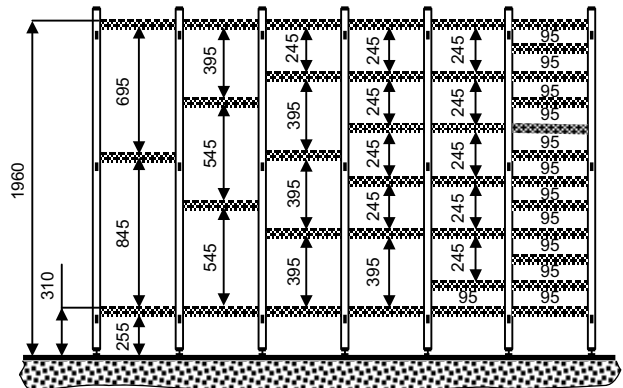
GAP BETWEEN SHELVES WITH SHOULDERS HIGH H = 1700

N° of shelves → 3 4 5 6 10



GAP BETWEEN SHELVES WITH SHOULDERS HIGH H = 2000

N° of shelves → 3 4 5 6 7 12



NOTE: H 2500 Special product, not GS certified

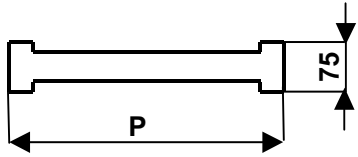
IN CASE OF SHELVING WIDE 300 / H = 1700-2000 AND 375 / H = 2000 IT IS NECESSARY TO FIX THEM TO THE WALL IN ORDER TO KEEP THEM FROM TURNING OVER

WE ADVISE YOU TO USE

Article **KFSFP2**

Stainless steel bracket for fixing shoulders to the wall

THERMOPLASTIC OR ALUMINIUM ELEMENTS FOR MAKING UP SHELVES



Available depth (P) types : 300 375 450 600 mm

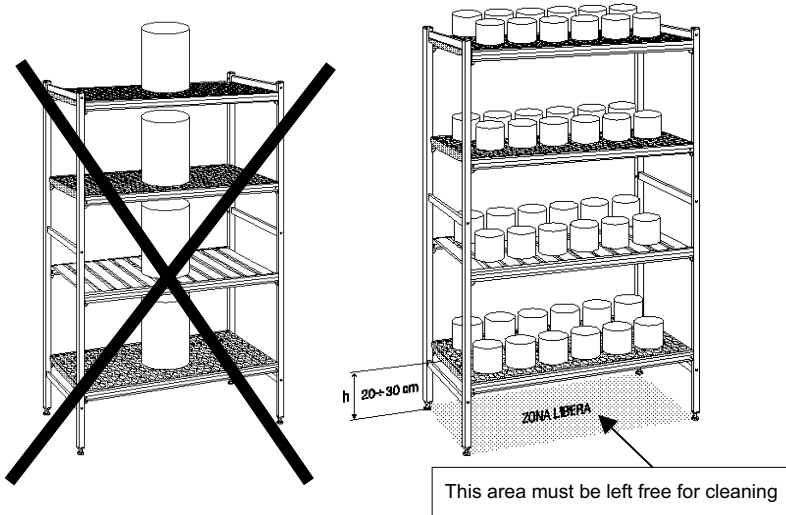
SHELVES CAPACITY CONDITIONS

(Capacity is guaranteed and certified with GS mark)



DATA FOR ALL DEPTH TYPES
(P = 300; 375; 450; 600)

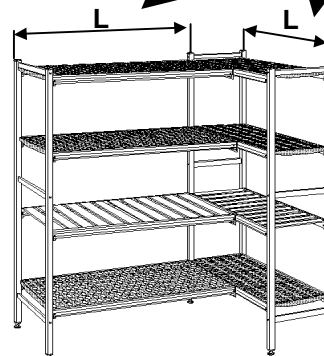
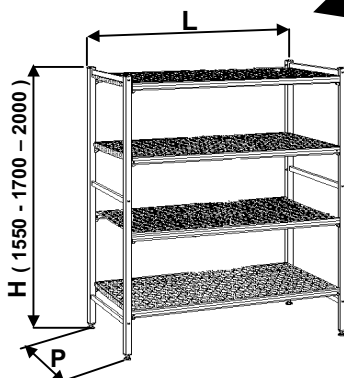
Length (L) mm	Kg capacity		N° of shelf elements mm 75
	Linear	Angular	
400	250	180	5
475	250	180	6
550	250	180	7
625	250	180	8
700	250	180	9
775	250	180	10
850	250	180	11
925	240	170	12
1000	240	170	13
1075	220	150	14
1150	220	150	15
1225	220	150	16
1300	200	140	17
1375	200	140	18
1450	200	140	19
1525	180	125	20
1600	180	125	21
1675	180	125	22
1750	150	100	23
1825	150	100	24
1900	120	85	25
1975	110	75	26



How to find allowed capacity in the columns above

LINEAR

ANGULAR



IN CASE OF SHELVING WIDE 300 / H = 1700-2000 AND 375 / H = 2000 IT IS NECESSARY TO FIX THEM TO THE WALL IN ORDER TO KEEP THEM FROM TURNING OVER

WE ADVISE YOU TO USE

Article **KFSFP2**

Stainless steel bracket for fixing shoulders to the wall